



BASIZEAFRICA (PTY)LTD

COMPANY PROFILE



BUSINESS DIRECTOR : BASIZE NGWENYA

About

Basizeafrica (Pty) Ltd is a company specializing in civil engineering and general construction for clients in the mining, government, commercial and residential sectors. Basizeafrica (Pty) Ltd's strong growth is based on the consistent implementation of top-level construction projects. Since starting as a small builder in 2015.

Since Basizeafrica (Pty) Ltd was founded in 2015, building strong partnerships has always been at the heart of our success. We encourage all clients to participate in an environment of transparency, trust, and respect. They allow us to be part of their success story.

Our strong and competent management team gives us great flexibility to meet your needs. We understand that our own organization is very dynamic and that is why our clients' business environment is constantly changing. Urgency is considered through discussions on requirements planning. We are currently implementing some of the cutting-edge technologies in cutting-edge industries such as telecom, energy management, and mining. We have become known for our leadership in providing our customers with "green" eco-friendly solutions.

Company Overview

Core Functions

- | | |
|---------------------------|--------------------------------------|
| ⦿ Civil Works | ⦿ Property Development |
| ⦿ General Building | ⦿ Petroleum Business |
| ⦿ Mechanical | ⦿ Building Materials supply |
| ⦿ Construction and Mining | ⦿ Mechanical and electrical Supplies |
| ⦿ Plant Hire | |

Success Factors

The organization's success is largely attributed to the following:

- ⦿ Professional staff
- ⦿ Technical Expertise
- ⦿ Dynamic Management Team

Basizeafrica (Pty) Ltd is able to attract and retain highly skilled and professional staff.

Civil Engineering

- ⦿ **Water Retaining Structures:** Sewage and water treatment plants
- ⦿ **Road Structures:** Retaining Walls, Bridges, Barriers
- ⦿ **Concrete Structures:** Concrete structures on mines, commercial buildings or any other application
- ⦿ **Pipelines:** Bulk transportation in Steel, uPVC, O-PVC, HDPE pipelines and process pipelines on mines and industrial buildings

Earthworks

- Excavation
- Filling and Compaction of Foundations & Platforms for Buildings and Civil Structures
- Storm Water-, Sewage- and Large Diameter Water Pipelin

General Building

- Developments
- Industrial, Commercial and Residential Buildings
- Low and middle income housing developments

Roads

- Surveying and Setting out of Road profiles and level

Building Materials supply

- | | |
|---|--------------|
| Bricks and Blocks for Building and Paving | Premixes |
| Cement | Wedges |
| Concrete | Roofing |
| Glass | Ceiling |
| Steel/Metal | Timber |
| Ceramics | Build mix |
| Sand | Concrete Mix |

Mechanical Supplies

- Ball valves (Pipeline valves, Floating ball valves, multi-port ball valves)
- Butterfly valves (CWP rated butterfly valves, P-T rated butterfly valves)
- Change Over Valves, Check valves special, cock valves, deluge vales, diaphragm valves.

Mechanical Supplies

- Pumps, Cables, cleaning equipment's, electrical accessories, hydraulic grease equipment's
- Conveyor (belts, equipment, belts rollers)

Core Values

We constantly strive towards the following:

- ⦿ To be an extension of our client's organisation
- ⦿ To treat each client as our only client
- ⦿ To be measured by our client's success
- ⦿ To maintain high ethical standards at all times
- ⦿ To make no excuses
- ⦿ To have fun

To be the best Contractor in South Africa in the field where we are working.

Our Strengths

Our strengths are embedded in:

- ⦿ Our people
- ⦿ Our commitment to partnering with clients
- ⦿ Our ability to provide creative solutions
- ⦿ Our passion for success

To execute every project according to the market project management principals.

Operations

- ⦿ Production
- ⦿ Safety and Quality Control
- ⦿ Site Financial Control
- ⦿ Stakeholder Liaison

Logistics

- ⦿ Fleet Management
- ⦿ Plant Hire
- ⦿ Asset Management
- ⦿ Facilities Management

Finance

- ⦿ Debtors and Creditors
- ⦿ Statutory & Financial Reporting
- ⦿ Inventory Management
- ⦿ Procurement and Treasury

Legal

- ⦿ Contractual/Legal
- ⦿ Risk Management
- ⦿ Corporate Governance
- ⦿ Company Secretariat

Corporate Services

- ⦿ Marketing
- ⦿ Business Development
- ⦿ Human Resources
- ⦿ Administration

Operations and Core Business Processes

Project Management

Basizeafrica (Pty) Ltd provides managed project solutions to clients from the tender process all the way through to completion.

What sets this enterprise apart though, is the willingness to provide support to clients after project completion.

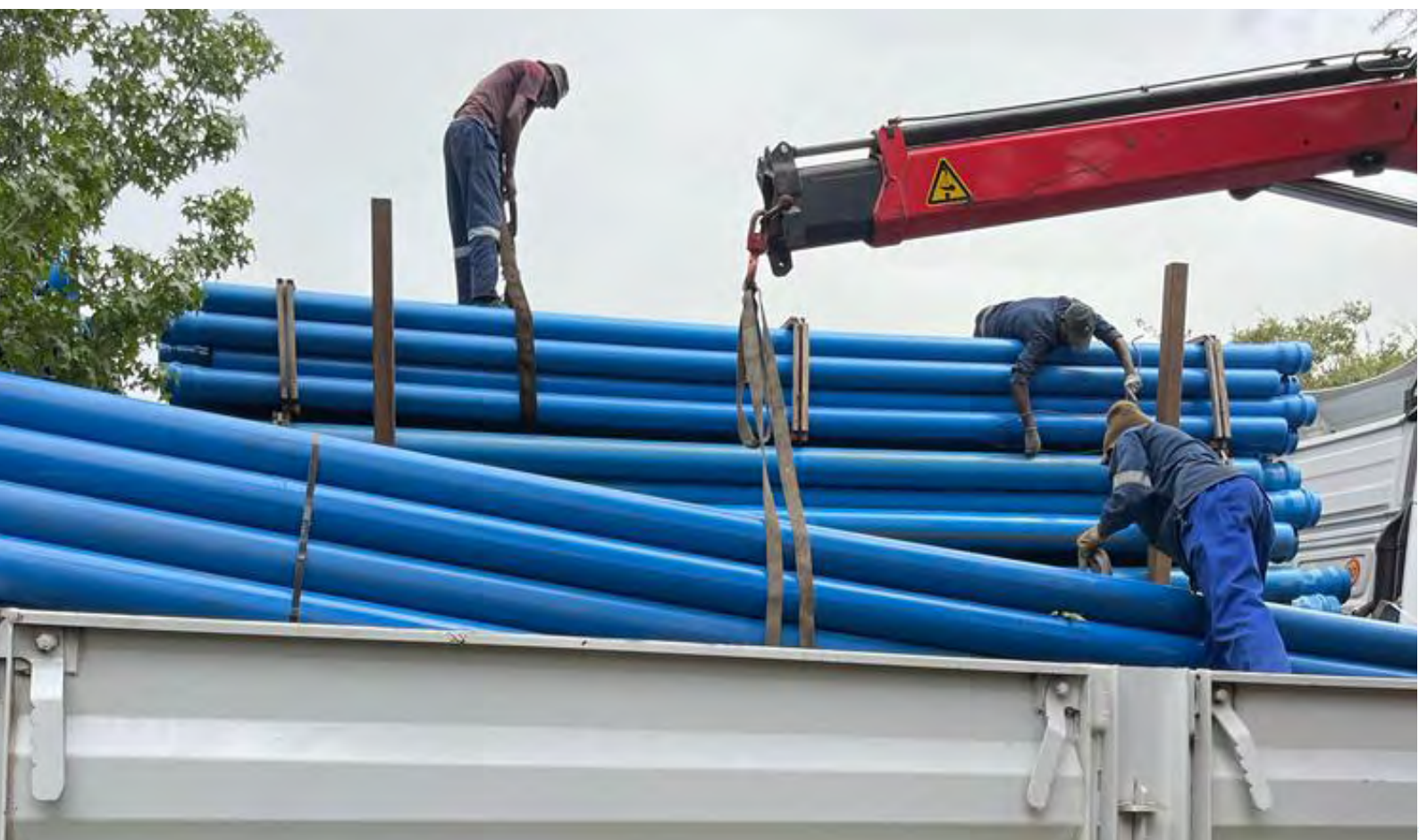
Compliance to internal, external quality requirements and those of governing bodies:

- Quality Plan and Controls
- Safety Plan and Controls
- Health and Environment
- Compliance to Regulatory and Statutory Requirements

Basizeafrica (Pty) Ltd Plant hire

Internal service provision (Site support)

- | | |
|---------------------------|----------------------------|
| ● Security Provision | ● Internal Plant Hire |
| ● Accommodation Provision | ● Feasibility Studies |
| ● Site Establishment | ● Procurement and delivery |





Health and Safety Policy

Health and Safety are two of the Company's most important legal and moral responsibilities. It is regarded alongside competent personnel and quality management as an essential foundation for successful business and social operations.

Health and safety are recognized, implemented and maintained from a legal, humanitarian and economic perspective. We believe that a superior safety approach is indicative of responsiveness and sensitivity to employee needs and policy procedures. As a result, higher morale and loyalty are reached amongst employees, cultivating enhanced productivity, which again fuels profitability.

Therefore, we strive to safeguard our employees and the general public, so far as reasonably practical, from injury, annoyance or risk during all company operations and activities. The outcome is worth the effort, as it maintains our constancy and vision as top achievers in the construction and development environment. In essence then, sustainability has been reached.

Environmental Management Policy

Basizeafrica (Pty) Ltd believes that a protected environment holds a future for all and is thus committed to maintain a clean environment and support the environmental program. This creates the ability to operate in a disciplined and sustainable manner over the long term and is fundamental to maintaining a competitive advantage,

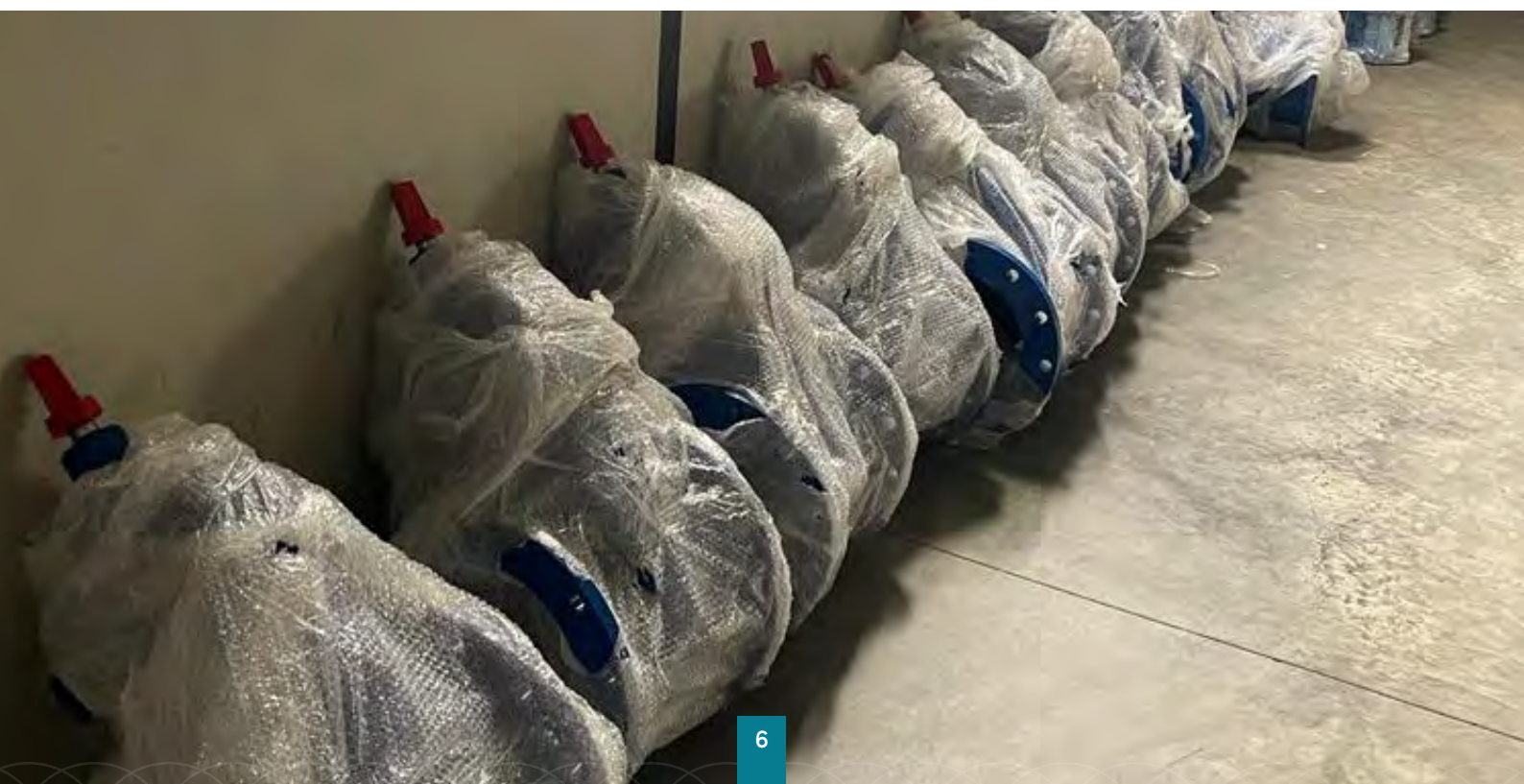
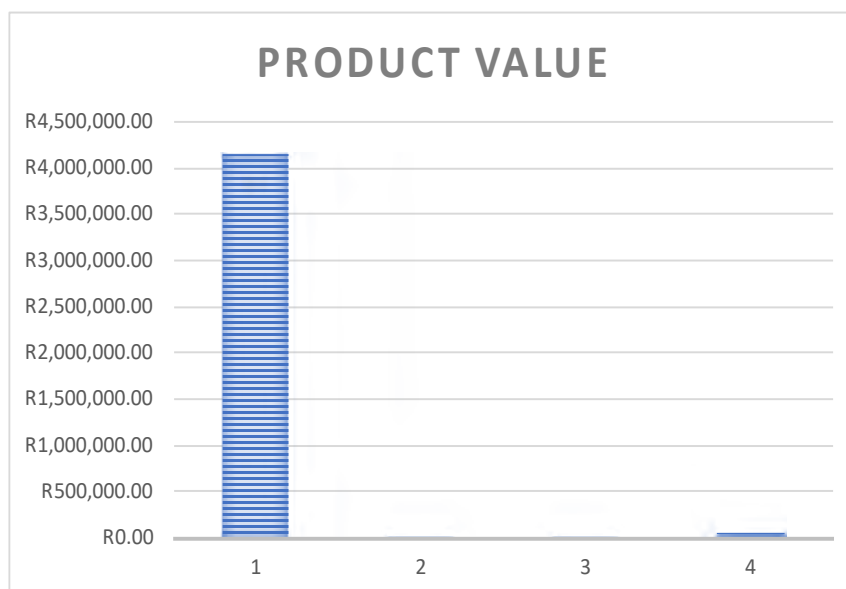
Our company policy is that the fulfilling of its legal and statutory responsibilities represents the minimum level of achievement in respect of environmental control. Management and employees of Basizeafrica (Pty) Ltd therefore, commit themselves to actively participate in the environmental control plan.

To completely comply with all legal and statutory requirements. To observe all environmental provisions regularly.

- Take responsible care of the environment.
- Do nothing liable to cause damage to the environment

Previous Work Done

Description of completed	Value of contract	Client (Name)	Order Number	Completed
Refurbishment of Embalehle Main Office Building	R 4,151 255,85	Govan Mbeki Municipality	004082	10 Sep, 2021
Supply PPE	R 19,055.00	Govan Mbeki Municipality	001956	22 Nov, 2018
Supply PPE	R 22,000.00	Govan Mbeki Municipality	001507	16 Oct, 2018
Supply PPE	R 84,835.00	Govan Mbeki Municipality	002082	06 Dec, 2018



Company Information

Company Name:

BASIZEAFRICA (PTY) LTD

Company Registration Number:

2015/142263/07

Company Vat Number

981141160

Company Construction Industry Development Board (CIDB):

CRS Number: 10108424

⦿ Grade 1EC

⦿ Grade 1GB

Broad-Based Black Economic Empowerment:

B-BBEE Contribution: Level 1

B-BBEE Procurement Recognition level: 135%

Letter of Standing:

Registration Number: 990001162706

Central Supplier Database (CSD):

Supplier Number: MAAA0020591

Company Physical Address:

📍 22 Princeton Street, Evander, 2280

Company Contact Details:

📞 Cell Phone Number: 082 615 0744

✉ Email Address: basize@basizeafrica.co.za

sales@basizeafrica.co.za

BASIZEAFRICA (PTY)LTD

COMPANY PROFILE



BUSINESS DIRECTOR : BASIZE NGWENYA